

THE SCHOOL OF PHILOSOPHY, WELLINGTON, PRESENTS

ART IN ACTION



WATCH LEADING ARTISTS CREATING WORK ON-SITE
GAIN A REAL INSIGHT INTO THE SKILLS NECESSARY FOR FINE WORK
LOTS OF ARTWORK EXHIBITED AND FOR SALE • FOOD & COFFEE



Aimee McLeod

POTTERY

With 19 years experience in NZ and Japan she focuses on the NZ and Pacific environment, using wheel and hand building with lower temperatures.



Barbara Kerr-Mann

CHIGIRIE & PAPER PAINTING

She brings to NZ the Japanese technique of torn-paper painting, learned while studying under chigirie sensei Akiko Otani in Yokohama.



Bruce Luxford

PAINTING

Through the successful interaction of space, scale, shape and human values, his surrealist content invokes reflection from the viewer.



Deirdre Hassed

CALLIGRAPHY

She is an experienced calligrapher exhibiting in NZ, Australia and the UK. She uses a variety of techniques to express words of wisdom and beauty.



Denise Simmonds

WATERCOLOUR PAINTING

She was highly commended in this year's Adam Portrait Award. Her style aims at perfection through careful observation and realistic interpretation.



Duncan Shearer

POTTERY

His strong forms are fresh and unique, using a wood-fired salt or soda kiln. His experience includes working with the Auckland Studio Potters.



Graeme McIntyre

ARTISTIC WOODTURNING

His art releases the hidden beauty in native woods. An award winning member of NZ and American woodturning associations.



Grant Tilly

MIXED MEDIA PAINTING

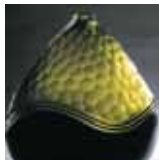
Previously well known for his drawings of Wellington houses, he now works in mixed media which includes triptych panels featuring native birds.



Jacky Pearson

WATERCOLOUR PAINTING

Her well known style uses light and atmospheric effects, particularly wet on wet. Her subject matter includes landscape, cityscape and figures.



Lyndsay Patterson

GLASS ARTS

Currently residing at Chronical Glass in Wanganui, he has been awarded the Thomas Art Award and has work held by The Dowse and Te Papa.



Paddy Burgin

LUTHIER - GUITAR MAKING

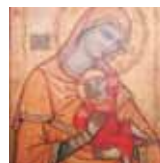
His instruments have been exported all around the world and have earned praise for their musicality by some highly acclaimed artists.



Peg Moorhouse

WEAVING

New Zealand's iconic weaver Peg has a passion for weaving linen using a damask loom. Her work has featured in the World of Wearable Art (WOW).



Roseanna Wohnsiedler

ICON PAINTING

Her naïve and contemporary studies of Byzantine Icons incorporate a fine use of gold leaf. A Telecom Art Award winner.



Tetyana Khytko

PAINTING

She presents a stimulating view of Wellington with unique abstracting impressions. She exhibits regularly, including with the Academy of Fine Arts.



Katie Brown

GLASS ARTS

Currently residing at Chronical Glass in Wanganui, she has extensive experience from studying under leading artists in America and England.



Tony Allain

PASTELS

He has worked with the Painters of Light in Cornwall, and his work appears regularly in artists magazines. He has rare adeptness with the pastel medium.



Tim & Akiko Crowther

JAPANESE CALLIGRAPHY

Founders of YU YU, NZ's first Japanese Calligraphy Gallery & School. Master Calligrapher Akiko teaches and creates traditional calligraphy, and the couple also make modern interpretations of this ancient art.



SPONSORS

RICHARD POINTON
COLLECTION
Oriental Handmade Kelims, Rugs, Carpets: Old and New.



Cluster
CREATIVE
www.clustercreative.com

THE DOMINION POST



SATURDAY & SUNDAY, 18th & 19th OCTOBER 2008

10AM TO 4PM AT PHILOSOPHY HOUSE, 33 ARO ST, WELLINGTON

DAY TICKETS: \$10 ADULT, \$5 STUDENT, \$25 FAMILY (2 ADULT, 2 CHILD)

UNDER 10yrs FREE! PURCHASE YOUR TICKET AT THE GATE ON THE DAY.

THE SCHOOL OF PHILOSOPHY WELLINGTON IS A NON-PROFIT ORGANISATION | WWW.PHILOSOPHY.ORG.NZ